

2011



COOKBOOK

Deploying Your Application to WinHost

Now that your application has been properly implemented, what's the next step? You can choose to set up a dedicated server to run your website, but this can be costly. An easier and cheaper solution would be to upload the application to a shared hosting service, such as [WinHost](#). They offer cheap and reliable ASP.NET hosting for a very low price. (Note: As *Code On Time* applications take more than 100MB of memory, you will need to order *WinHost Max* – this also gives you up to 10 databases).

Deploying Your MySQL Application to WinHost

This article will guide you through the steps to deploy your *Web Site Factory* application to *WinHost*, assuming that you are using MySQL to store data on [WinHost](#), and you are using ASP.NET membership. The standalone database option must be enabled, and referring to the original MySQL database on your WinHost account.

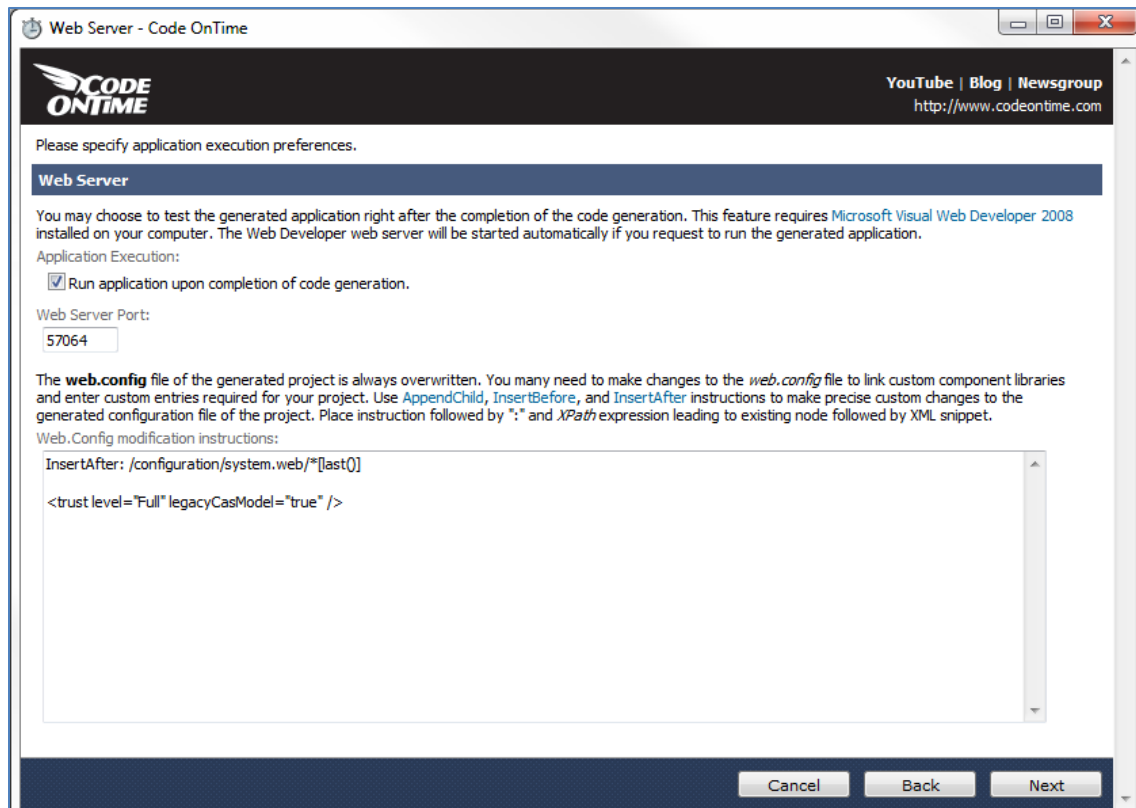
Modify web.config

For deployment, you will need to modify the *web.config* file of your application. This is easily done by running *Code On Time Generator*, selecting your project, and navigating to the *Web Server* page. Insert the following code into the *Modification Instructions* textbox:

```
InsertAfter: /configuration/system.web/*[last()]
<trust level="Full" legacyCasModel="true" />

InsertBefore: /configuration/system.web/membership/providers/add[1]
<clear/>

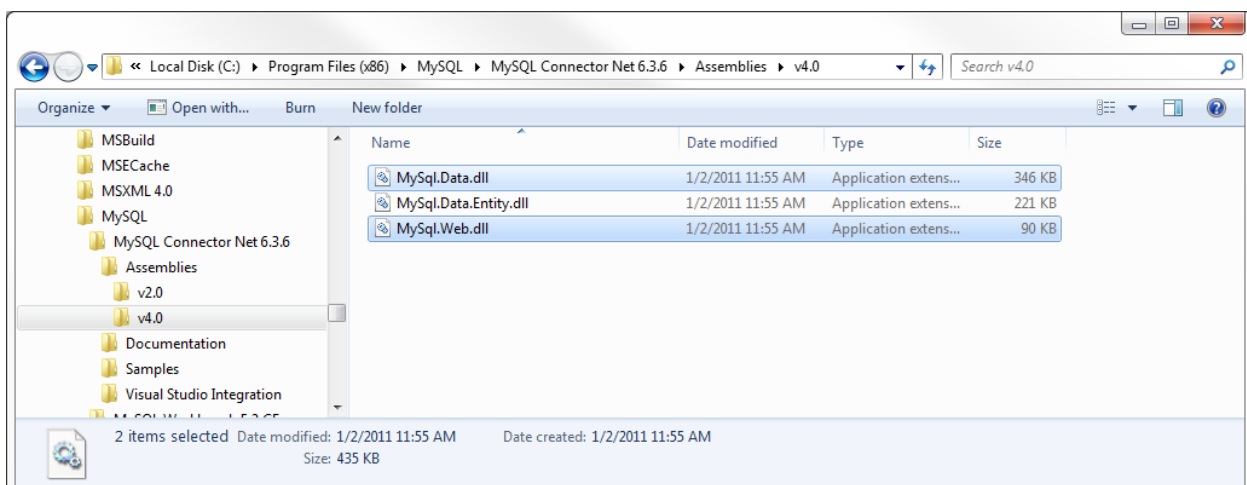
InsertBefore: /configuration/system.web/roleManager/providers/add[1]
<clear/>
```



This will insure that the hosting provider will allow ASP.NET to compile the web site without errors. Press *Next* to regenerate your application.

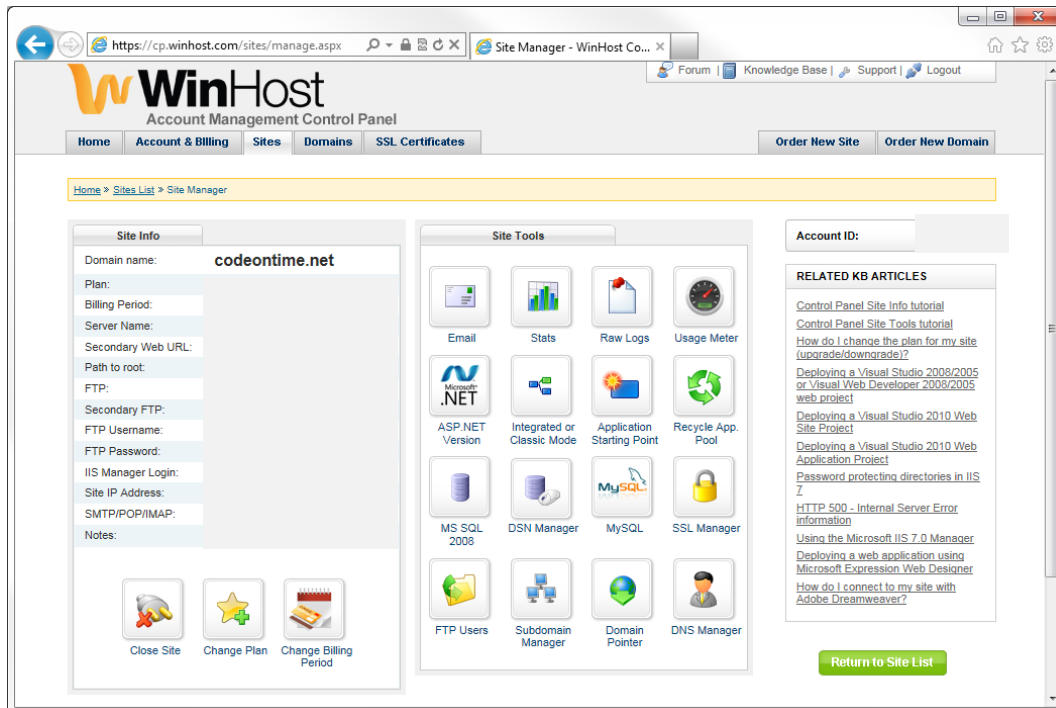
Add Data and Web Providers

At the time of this article, [WinHost](#) did not have the correct assemblies. In *Windows Explorer*, navigate to *C:\Program Files (x86)\MySQL\MySQL Connector Net 6.3.6\Assemblies\v4.0* and copy the *MySQL.Data.dll* and *MySQL.Web.dll* files. Paste them in the *\bin* folder of your application.

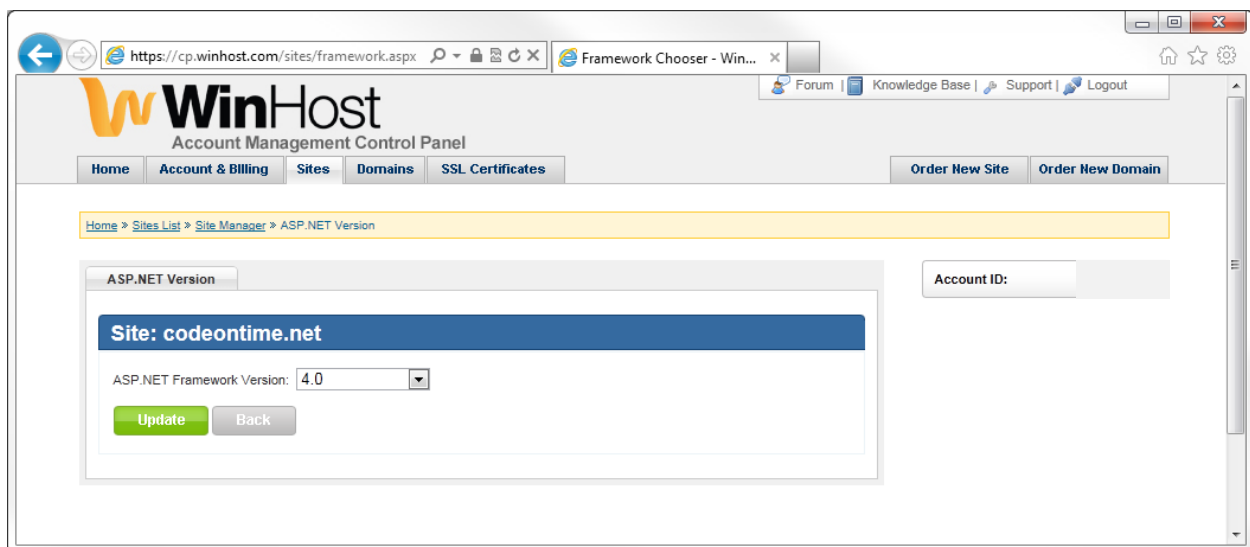


Configuring the Settings in WinHost

You will need to change some settings in your [WinHost](#) control panel. Log in to your *WinHost* account, and switch to the *Sites* tab. Press *Manage* next to the site you are planning to use. You will end up on the *Site Manager* page.



Click on *ASP.NET Version* under the *Site Tools* section. Change the *Framework Version* to “4.0” (or whichever version you’re using in your web application).



Next, click on *Integrated or Classic Mode*. Change the *Pipeline Mode* to “Integrated”.

Browser window showing the WinHost Account Management Control Panel. The address bar displays <https://cp.winhost.com/sites/pipelinemode.aspx>. The page title is "Application Pipeline Mode ...".

The WinHost logo is visible, along with the text "Account Management Control Panel". Navigation tabs include Home, Account & Billing, Sites, Domains, and SSL Certificates. Action buttons for "Order New Site" and "Order New Domain" are present.

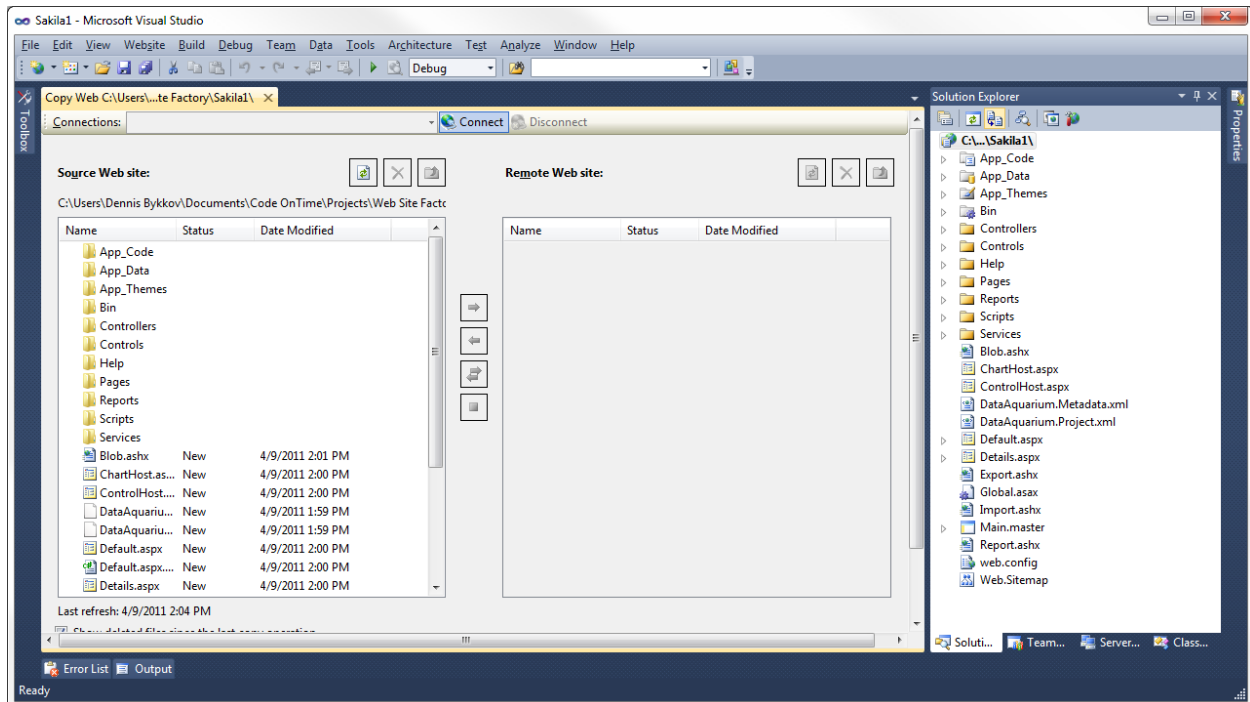
A breadcrumb trail shows: Home > Sites List > Site Manager > Integrated/Classic Pipeline Mode.

The main content area is titled "Pipeline Mode" and displays the site "codeontime.net". The "Application Pool Pipeline Mode" is set to "Integrated". Buttons for "Update" and "Back" are available.

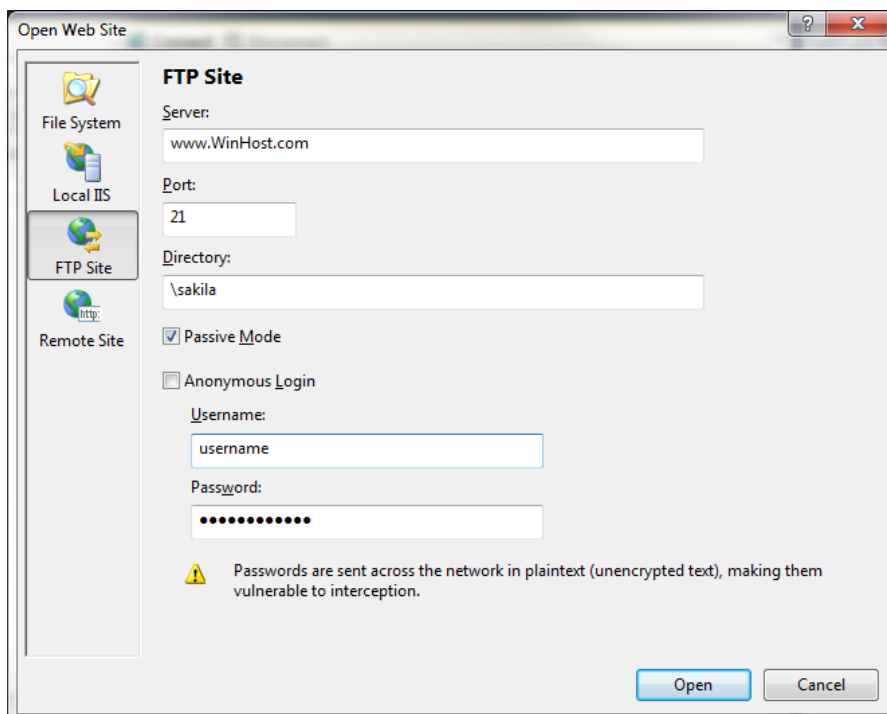
On the right, there is a section for "Account ID:" and a "RELATED KB ARTICLES" section with a link to "Application Pool Pipeline Mode in IIS 7".

Copy Web Site Using FTP

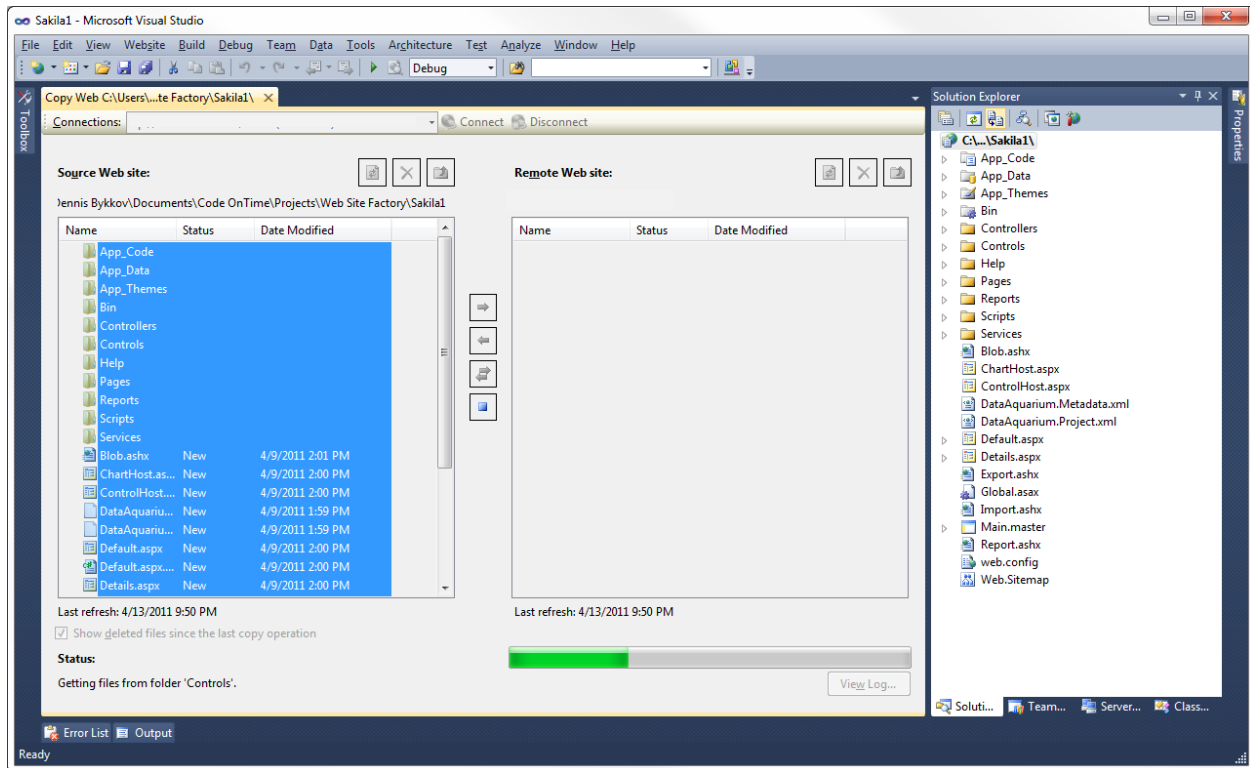
You will now need to open your project in *Visual Studio 2010*. This can be done by pressing *File | Open Web Site*, and selecting the name of the folder containing your project. On the menu bar, press *Website | Copy Web Site*. On the *Connections* bar, press *Connect*.



Enter your server name, directory, and login information, and press *Open*.

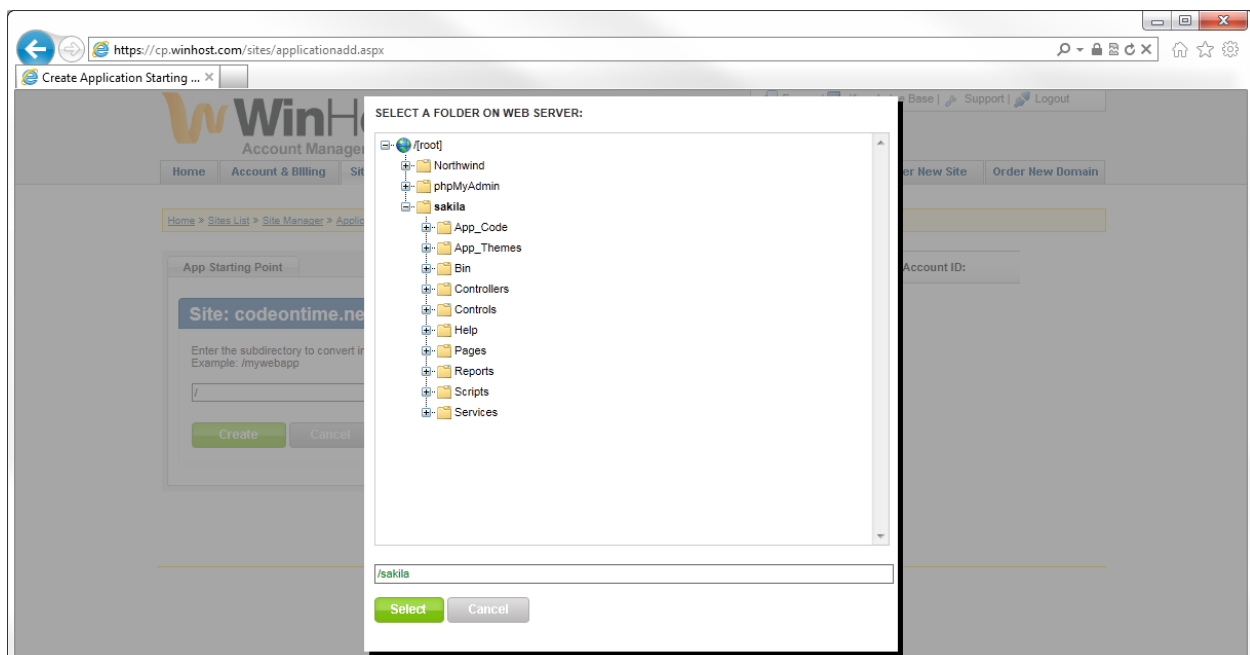


Now, select all the files from your web site and press the right arrow to copy them over to your [WinHost](#) website.



Creating Application Starting Point

Go back to the [WinHost](#) control panel. Select the *Application Starting Point* tool, and press *Create*. Type in the directory you uploaded to earlier, or use the *Browse* button to find it.



Press the *Create* button. You can now navigate to the URL of your application, and your sophisticated web application will have complete functionality.

The screenshot shows a web application for 'MyCompany' with a URL of `http://codeontime.net/sakila/Pages/address.aspx`. The page is titled 'Address' and displays a list of addresses. A sidebar on the left contains navigation links for 'Summary', 'About', and 'See Also'. The main content area features a table of addresses with columns for Address, Address2, District, City, and Country. A dropdown menu is open over the 'Actions' column, showing options like 'Download', 'Export to Spreadsheet', 'View RSS Feed', and 'Import From File'. Below the address table, there is a section for 'Customer' management, showing a list of customers with columns for First Name, Last Name, Email, Active, Create Date, Last Update, Address City, and Country.

Address Table Data:

Address	Address2	District	City	Country
47 MySakila Drive	n/a	Alberta	Lethbridge	Canada
28 MySQL Boulevard	n/a	QLD	Woodridge	Australia
23 Workhaven Lane	n/a	Alberta	Lethbridge	Canada
1411 Lillydale Drive	n/a	QLD	Woodridge	Australia
1913 Hanoi Way	n/a	Nagasaki	Sasebo	Japan
1121 Loja Avenue	n/a	California	San Bern	United States
692 Joliet Street	n/a	Attika	Athenai	Greece
1566 Inegil Manor	n/a	Mandalay	Myingyan	Myanmar
53 Idfu Parkway	n/a	Nantou	Nantou	Taiwan
1795 Santiago de Compostela Way	n/a	Texas	Laredo	United States

Customer Table Data:

First Name	Last Name	Email	Active	Create Date	Last Update	Address City	Country
ELIZABETH	BROWN	ELIZABETH.BROWN@sakilacustomer.org	Yes	2/14/2006	2/15/2006	Nantou	Taiwan